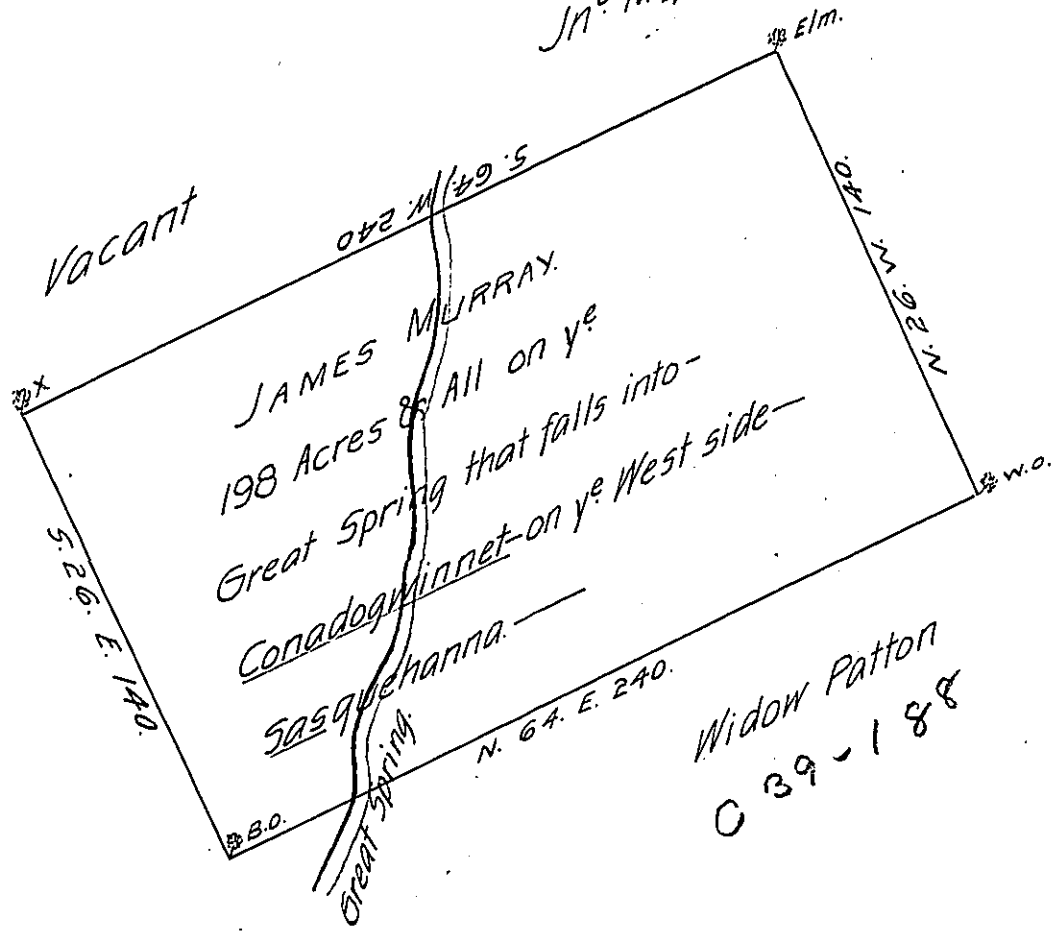


C-39-189

Jn^o Miserland

C 138-151

Jas Loughlin
D-3-279



A Draught of James Murray's Land Situate on the Great Spring that falls into- Conadogwinnet Creek on the Line Between the Townships of Hopewell & Pennsborough in the County of Lancaster. Containing 198 Acres & the Allow^a of 6 $\frac{1}{2}$ Cent. By Virtue of the Proprietaries Warrt dated ye 12 August 1741. Survey'd the 15 of September 1741.

J. Tho: Cookson.

Dep^y. Surr^t.

IN TESTIMONY that the above is a copy of the original remaining on file in the Department of Internal Affairs of Pennsylvania, made conformably to an Act of Assembly approved the 16th day of February, 1833, I have hereunto set my Hand and caused the Seal of said Department to be affixed at Harrisburg, this eighteenth day of October 1905.

George D. Brown
Secretary of Internal Affairs.